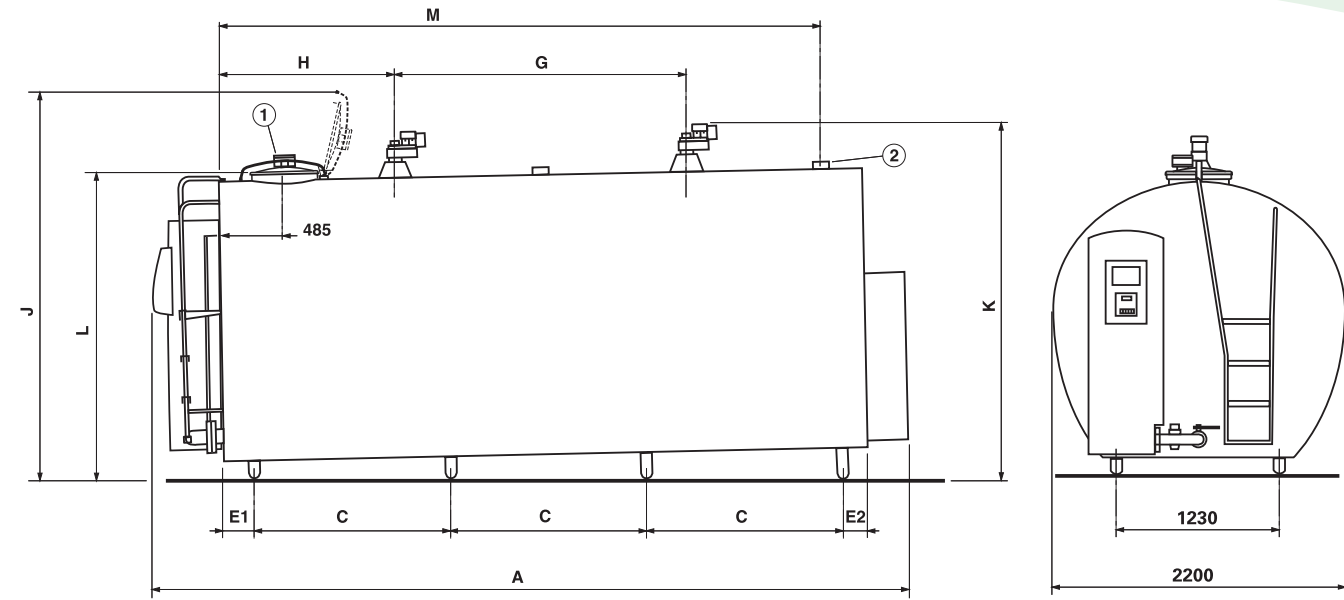


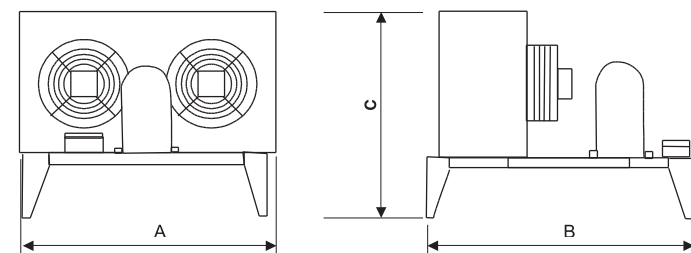
# Atlas specifications



1 - Manhole Ø 450 mm with milk inlet Ø 80 mm.  
2 - Rear milk inlet Ø 80 mm.

Nominal capacity in litres	10000	12000	14000	16000	18000	20000	25000	30000
Maximal capacity in litres	10300	12350	14400	16450	18500	20500	25700	30800
Number of legs	6	6	8	8	8	10	12	12
Number of agitators	1	2	2	2	2	2	3	3
Number of wash diffusers	2	2	3	4	4	4	6	6
Gross weight in kilos (export packed)	1820	1990	2170	2420	2640	2900	3490	4180
Dimensions in mm								
Overall length	A	4130	4805	5465	6165	6835	7520	11030
Distance between legs (lengthwise)	C	1528	1862	1462	1696	1918	1610	1990
Leg positioning front	E1	200	208	206	207	207	206	206
Leg positioning rear	E2	180	175	181	180	180	180	181
Distance between agitator motors	G		1780	2200	2486	2593	2900	2454
Agitator motor positioning from tank ends	H	1735	1210	1300	1510	1785	1900	1835
Maximal front height with open lid	J	2864	2864	2864	2864	2864	2924	2924
Maximal rear height *	K	2595	2630	2645	2660	2672	2688	2838
Minimal height **	L	2270	2270	2270	2270	2270	2330	2330
Position rear milk inlet	M	3200	3870	4535	5235	5905	8320	10100

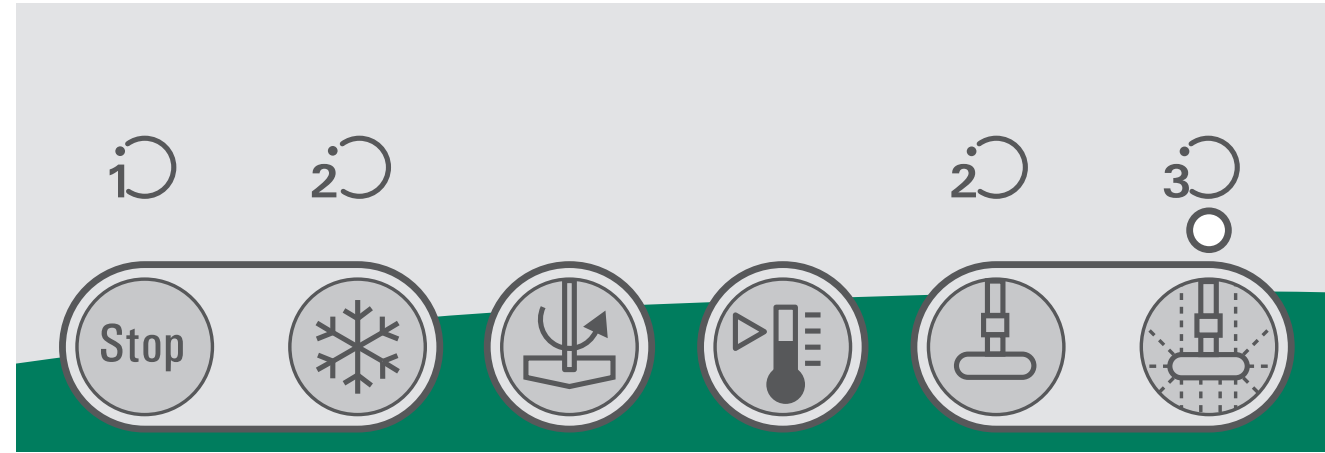
\* With agitator motors.  
\*\* Legs screwed all the way in, without agitator motors and lid.



	7,5 Ch	10 Ch	13 Ch	15 Ch
A	1170	1590	1590	1680
B	800	800	800	800
C	860	1025	1025	1130
Kg	195	215	230	245

# Systems – Service – Success

The Atlas cooling tank incorporates the latest technology in cooling, washing, controlling and measuring to meet the highest requirements of progressive dairy producers.



## ProFormance

Modern system solutions and regular technical servicing for maximum performance and highest quality milk

Individual consultancy and planning of installations for your business: perfectly matched components, customer-specific system solutions and a variety of measures for continuous system optimisation.

## ProMilk

Comprehensive service and product concept for top quality milk

On-site individual customer service provided by the hygiene experts in order to ensure optimum hygiene during milking. Advice on the effective use of products for installation and animal hygiene.

## ProDairySupplies

Spare parts, regular technical servicing and accessories for first class milk production.

A customised solution for every dairy farm: professional-grade accessories, spare parts and all your consumable needs for economical and reliable milk production.

Dealer area

WestfaliaSurge GmbH • Siemensstr. 25 - 27 • D-59199 Bönen  
Tel. +49 (0) 23 83 - 93 70 • Fax +49 (0) 23 83 - 93 71 63 • www.westfaliasurge.com



Milk refrigeration

ProFormance



# Atlas milk cooling tank

- High efficiency cooling
- Superior sanitation
- Accurate measuring
- Intelligent control
- Low running costs
- From 10000 to 30000 litres

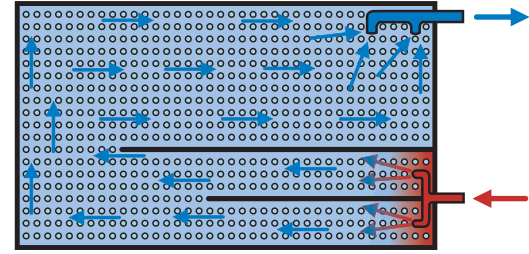
9997-0999-010 / PSC 30010105 / 9502020199 / S+L / D: Stu / 11.05 · We reserve the right to modify the construction and design in all cases!



## Cooling at its best and energy saving

### STIL evaporator

The evaporator plates of the Atlas are specifically designed for high capacity milk tanks. "Semi Tubular Integrated Laser" type evaporators (STIL) guide the refrigerant over the whole surface to optimize heat transfer.



### SCROLL compressors

The remote cooling units are equipped with SCROLL type compressors for a reduced energy consumption and noise level.

**Highest quality standards:** Conforms to EN, ISO and NF standards, class BII; proper cooling at ambient temperatures up to 38°C; refrigeration of every milking from 35°C to 4°C within 3 hours with ambient temperatures of 32°C.

## Superior sanitation protects milk quality

After keeping milk at the right temperature, the next most important function of a milk tank is to keep milk pure. That's why WestfaliaSurge has invested so much attention to milk tank sanitation. The Atlas milk tank offers an unequalled washing system that assures the highest possible milk quality.

- Facility to adjust and select the wash cycle to fit specific conditions.
- Rotary diffusers are independent from agitators and avoid damage to the agitator motor.
- High capacity wash pump.
- Water intake independent from network water pressure with the use of a water level detection.
- Increased efficiency thanks to Dynamic Water Intake.
- Two dosing pumps automatically dispense detergents directly from containers. The Expert control manages alteration of detergents.
- User-friendly: all components are mounted under an easily removable stainless steel front panel.



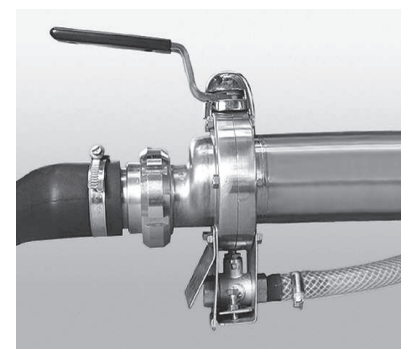
### Dynamic water intake

Injected through a separate circuit, the water is sprayed on the sides of the tank to remove milk residue and solid particles.



### Rotary Diffuser

The rotary diffuser combined with a high capacity wash pump ensures the mechanical action that is essential for efficient cleaning.



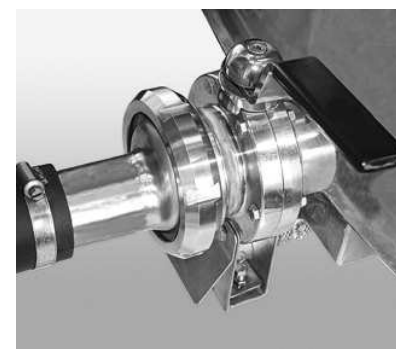
### Anti-dilution safety valve

This patented valve prevents water from mixing with milk in the tank.



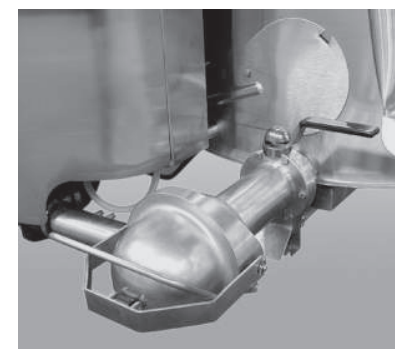
### Manhole

The lockable manhole lid forms a tight seal without the need for a gasket. It is double-hinged which allows easy lateral and vertical opening in a small space.



### Milk outlet

Ø 76 mm butterfly valve is ready for high speed pumping and adapts to any future milk collection requirements.



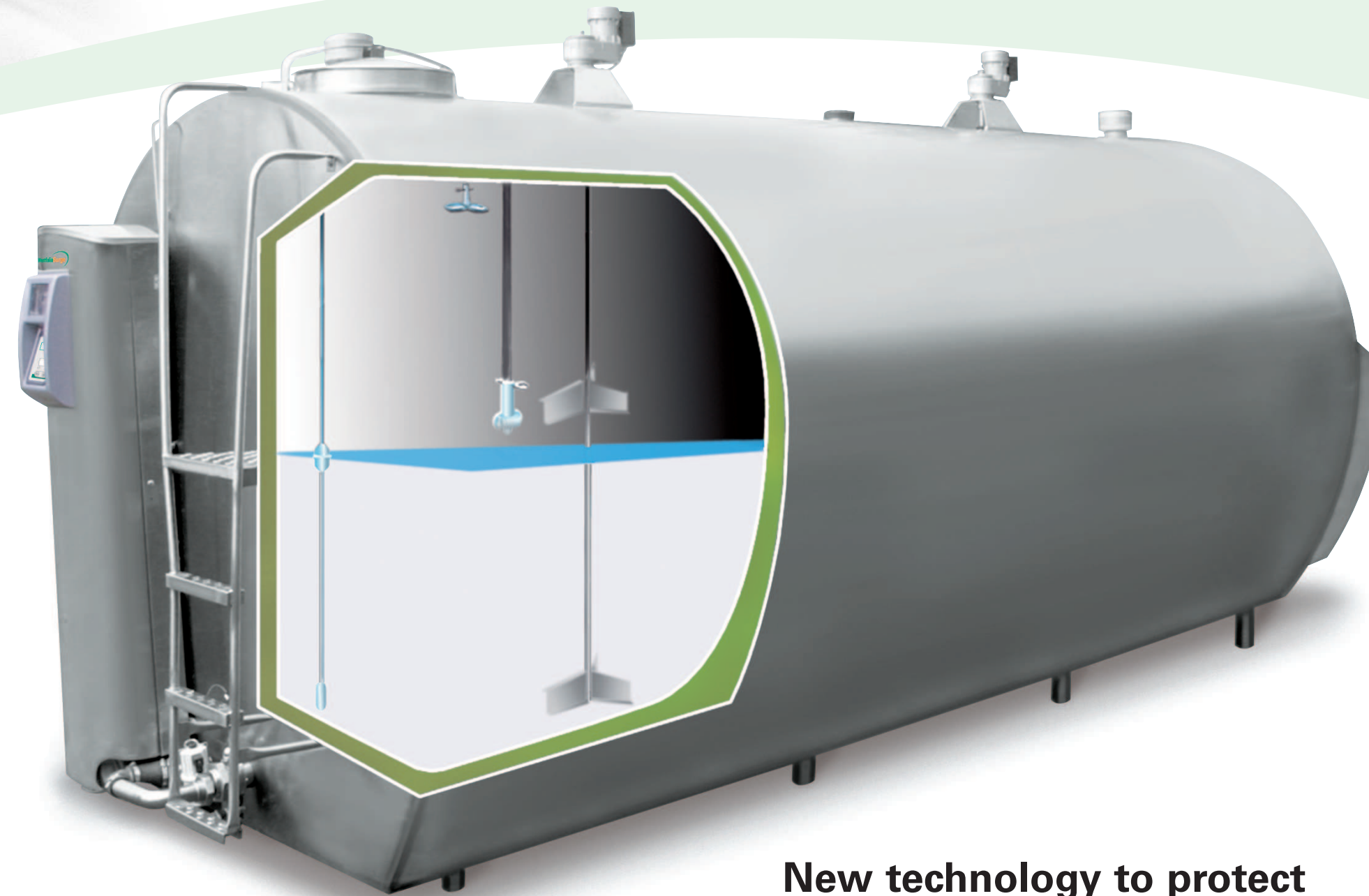
### Self washing outlet

Allows automatic washing of the threaded coupling (optional).



### Water heater

A modular water heater, with power ratings matched to the tank capacity, can be mounted in the washing unit as an option.



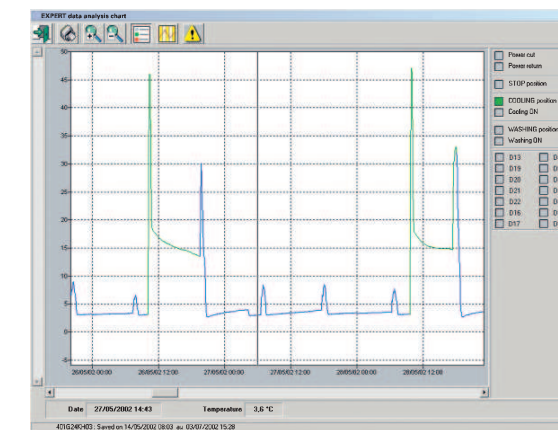
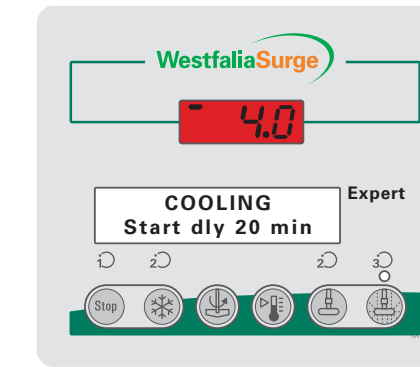
## New technology to protect your valuable milk

### Most precise measuring

Atlas tanks are reinforced to ensure a reliable and accurate measure of milk quantity. Each Atlas tank is calibrated individually and delivered with a millimetre dipstick and calibration chart; calibration approved by several Metrology Authorities around the world.

### Digital dipstick

Patented by WestfaliaSurge, this is the only digital measuring device of its kind approved by several weights and measures authorities around the world. Accurate to 0.2 % with 0.1 mm sensitivity, the digital dipstick eliminates human error in measurement. It automatically measures and displays milk volume and can be connected to Dairy Plan Management software.



## Expert control

### Intelligent control of all tank functions.

- Clearly displays information on 32-digit LCD panel.
- One control for all cooling and wash functions.
- Monitors milk quality and tank functioning.
- Stores functioning data over 2-month period.
- Optional Expertise software allows you to collect and analyze data.
- Can be connected to Dairy Plan Management software.

## Other options and accessories

- Disinfection cycle at the end of washing or before milking.
- Separation of milk-contaminated wash water.
- Internal ladder.
- Heat recovery systems.

