

FIRST.ICE

ICE BUILDER

Model shown :
FIRST 250.ICE



Complete system for production and accumulation of ice equipped with :

Tank

Cylindric vertical jacketed tank AISI 304. Stainless steel lid with one filling and one inspection opening. High density polyurethane insulation, without CFC, 50 mm thickness. 4 adjustable legs. Ø 51 drain.

Evaporator

Standard copper coil to produce necessary ice quantity.

Ice sensor

Ice sensor is located on the copper coil controlling the ice thickness.

Ice water circulation

Outlet side of the ice builder a pump supply ice water towards the mobile tank exchanger (circulation loop). Optimization is done to provide 1°C ice water during ice melting. Pump is protected with a stainless steel cover.

Cooling equipment :

Hermetic type cooling unit located on the top of the tank to reduce ground space. R 404A refrigerant. Stainless steel cover.

Electric equipment :

RL5 electronic control unit fixed to the ice builder provide :

- milk temperature control,
- ice production, agitation and cleaning controls,
- alarms,
- milk temperature display,
- power supply 6 m cable to provide current to the mobile milk cooler (agitation, cleaning pump and temperature pump).

(refer to sheet ref : WP-1K-A05).

FIRST.WAY

Capacity 550 to 2500 liters

Mobile milk coolers

Model shown :
FIRST 1700.WAY MSE



Tank :

MSE model :

Self supporting elliptic jacketed tank. Insulated with high density polyurethane foam, without CFC, sandwich structure. Internal and external wall AISI 304.

MS model :

Jacketed close tank AISI 304, cylindrical vertical shape. Manhole and external wall welding are watertight. Insulated with high density polyurethane foam, without CFC.

MS and MSE tank common specifications :
Bottom tank heat exchanger adapted to chilled water inlet and outlet water pipe to be closed when the heat exchanger is not in use. Ø 400 manhole with watertight lid. Ø 76 hole for filling and venting. DN 50 drain valve (DIN type).

Trailer equipped with :

- Galvanized iron chassis,
 - Axle with automatic reversing,
 - Caravan fastening style,
 - Own brakes and parking brakes,
 - Backwheels with suspension,
 - One retractable wheel,
 - Traffic lights for circulation on public highways,
 - Adapted stop wheel.
- Permitted speed to be checked with local regulation.

Agitation and homogenization :

Low speed gear motor.
Automatic cyclic agitation or continuous agitation.
Fat milk homogenization in 2 minutes according to ISO 5708 standard.

Cooling equipment :

The milk cooling is done with chilled water using the tank bottom exchanger. Chilled water comes from ice done in a separate tank between each milking. Ice tank capacity is able to cool down to 4°C during less than 3 hours (ambient temperature until 32°C, B2 type).

Electric equipment :

At the rear part of the mobile tank a plug allows all electrical connections (temperature probe, agitator, cleaning pump).

Automatic cleaning :

Automatic cleaning includes precleaning and rinsing with circulating water. Water and cleaning agent box is located on the ice tank with easy connection to the cleaning pump. Cleaning pump located left side of the mobile tank drain valve. Diffusion by fork piece for MSE model, CIP ball for MS model.

Options :

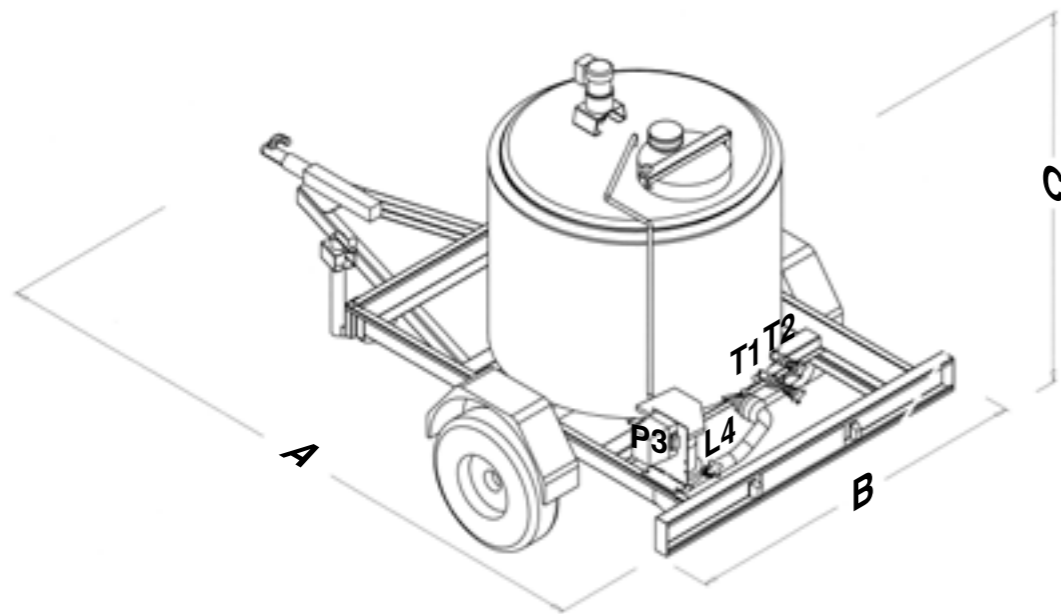
- Milk transfer pump (to empty the tank),
- Outlet valve threads on request,
- Draining valve cleaning on request (on MSE model without milk transfert pump only).

Standards :

According to international standard ISO 5708.
According to european directive regarding road safety.
According to european CE norms.

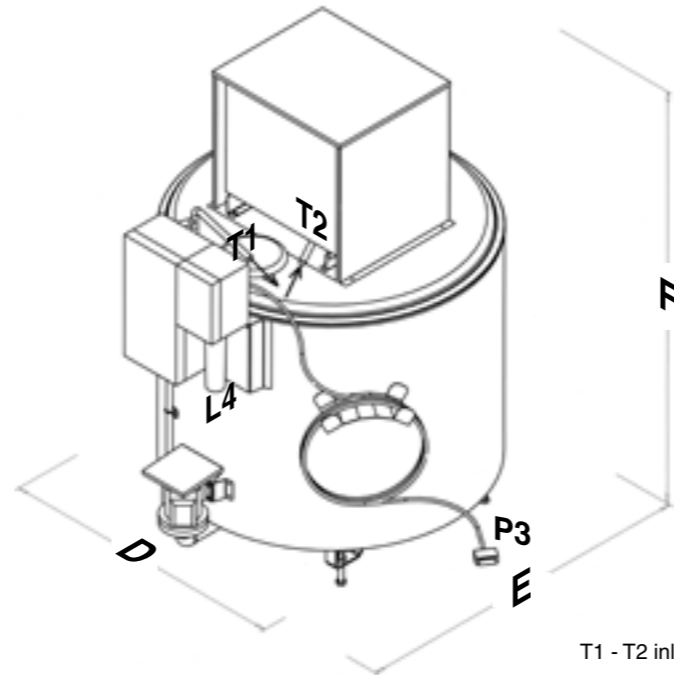
FIRST.WAY MS

Mobile milk coolers



FIRST.ICE

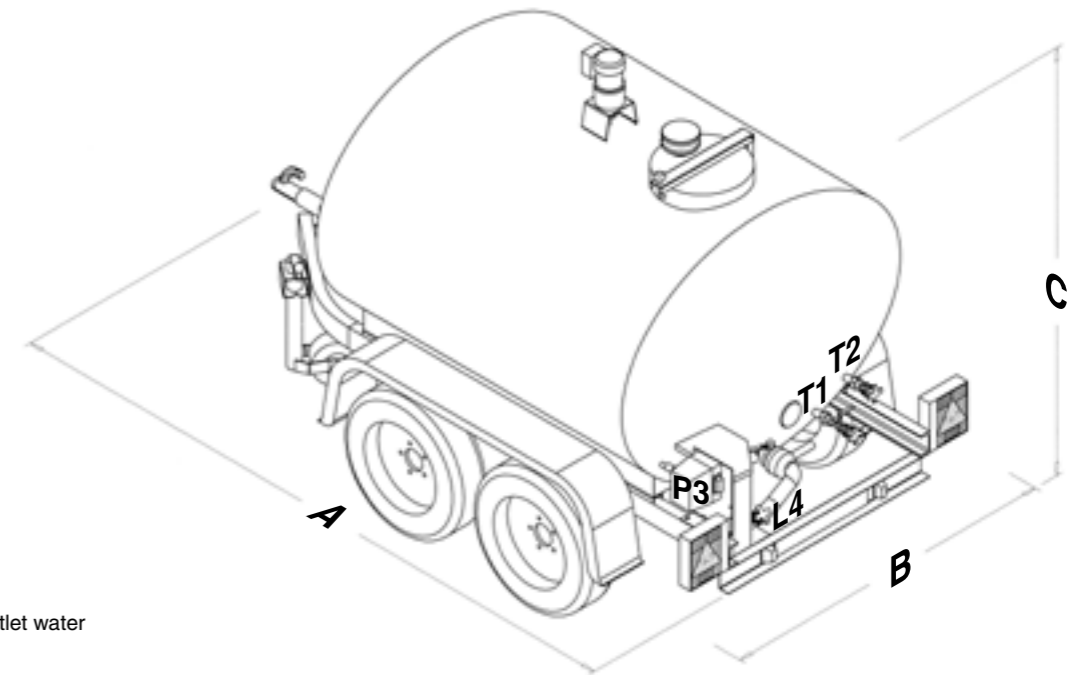
Ice builder



T1 - T2 inlet and outlet water
P3 electrical plug
L4 inlet cleaning

FIRST.WAY MSE

Mobile milk coolers



Model	MS 550	MS 670	MS 850	MS 1000	MS 1250	
DIMENSIONS in mm						
Nominal volume	550	670	850	1000	1250	
Length	A	2620	2620	2620	2840	2840
Width	B	1400	1400	1340	1650	1650
Height with agitator	C	1600	1750	1900	2000	2170
Empty tank weight		370	375	385	510	520
Autorized total weight		1300	1300	1300	1800	1800
Total weight at coupling hook		80	80	80	100	100
Axle		1	1	1	1	1
SPECIFICATIONS (2 milkings - ISO 5708 - performance 2BII)						
Ice builder		FIRST.ICE 150		FIRST.ICE 250		
Ice quantity produced in kg		150		250		
Cooling unit		TAJ 9513 ZMH		TFH 4524 ZMH		
Power (hp)		1,25		2		
Diameter	D	950		1260		
Width	E	1190		1500		
Height	F	2140		1900		
Standard electric power 50Hz		Tri / 400 V		Tri / 400 V		
Empty tank weight		230		285		
SPECIFICATIONS (4 milkings - ISO 5708 - performance 4BII)						
Ice builder		-		FIRST.ICE 150		
Ice quantity produced in kg		-		150		
Cooling unit		-		TAJ 9513 ZMH		
Power (hp)		-		1,25		
Diameter	D	-		950		
Width	E	-		1190		
Height	F	-		2140		
Standard electric power 50Hz		-		Tri / 400 V		
Empty tank weight		-		230		

Model	MSE 1100	MSE 1300	MSE 1500	MSE 1700	MSE 2060	MSE 2500	
DIMENSIONS in mm							
Nominal volume	1100	1300	1500	1700	2060	2500	
Length	A	2840	3070	2840	3020	3320	3700
Width	B	1500	1500	1600	1600	1600	1600
Height with agitator	C	1850	1850	2000	2000	2000	2000
Empty tank weight		590	610	625	640	830	870
Autorized total weight		1800	2500	2500	2500	3500	3500
Total weight at coupling hook		100	100	100	100	100	100
Axle		1	2	2	2	2	2
SPECIFICATIONS (2 milkings - ISO 5708 - performance 2BII)							
Ice builder		FIRST.ICE 250		FIRST.ICE 370			
Ice quantity produced in kg		250		370			
Cooling unit		TFH 4524 ZMH		TFH 4531 ZMH			
Power (hp)		2		2,5			
Diameter	D	1260		1260			
Width	E	1500		1500			
Height	F	1900		2400			
Standard electric power 50Hz		Tri / 400 V		Tri / 400 V			
Empty tank weight		285		430			
SPECIFICATIONS (4 milkings - ISO 5708 - performance 4BII)							
Ice builder		FIRST.ICE 150		FIRST.ICE 250			
Ice quantity produced in kg		150		250			
Cooling unit		TAJ 9513 ZMH		TFH 4524 ZMH			
Power (hp)		1,25		2			
Diameter	D	950		1260			
Width	E	1190		1500			
Height	F	2140		1900			
Standard electric power 50Hz		Tri / 400 V		Tri / 400 V			
Empty tank weight		230		285			



ROUTE DE FOUGÈRES • 53120 GORRON • FRANCE
TÉL. (+33) (0)2 43 08 49 49 • FAX (+33) (0)2 43 08 66 19
serap-industries@groupe-serap.com • www.groupe-serap.com



THE SERAP GROUP COMPANY RESERVES THE RIGHT, WHILE PRESERVING THE ESSENTIAL CHARACTERISTICS OF THE MODELS DESCRIBED, TO INTRODUCE WITHOUT NOTICE ANY MODIFICATIONS AS MAY BE CONSIDERED NECESSARY TO IMPROVE THE MODELS DESCRIBED.