

Features of the iControl

Human Machine Interface (HMI)

Provides a visual interface between a person and the milk cooling tank. HMI allows the user to control, monitor, diagnose and manage the application.


Display



Compliance

- To EN electrical safety regulations: EN13732 > EN60204

Connections hardware:

<p>Easy update of spare parts lists, user manuals, ... using a USB-stick</p> 	<p>Regulation of</p> <ul style="list-style-type: none"> Packo eco-tronic Packo eco-cool Packo eco-wash Packo Soft Start Cooling 	<p>PC at distance: possible to read-out and optimize user parameters*</p> 
--	---	---

* integration in the iControl end 2012



Home	Cooling	Cleaning	Agitation	Instant cooling
Bookmarks	Pre-cooling	Robot	Pneumatic valve	
Settings	Graph	Numeric	External*	
Help	User	Installer	Packo	Start-up
	Announcements	Manuals	FAQ - trouble shooting	

packo.com

Packo Inox nv
 Torhoutsesteenweg 154 - 8210 Zedelgem - Belgium - T +32 50 25 06 10 - F +32 50 20 07 52 - inox@packo.com - www.packo.com

The photographs and descriptions provided are intended as a guide and may not always exactly match the items supplied. We recommend you check with PACKO prior to ordering. For other models: please contact PACKO INOX. Subject to modifications.

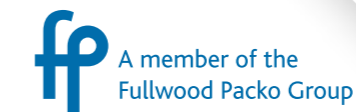


iControl
 Packo milk cooling tank control unit

informative intelligent interactive

The central brain of your milk cooling tank

For a modern dairy farmer, the milk cooling tank is more than just cooling and cleaning. Therefore the iControl stands for information logging, intelligent software and a clear and simple interaction between user, milking system and milk cooling tank.



Informative



First milk cooling tank with a 7" touch screen! All information is 1 touch away.

One control panel – all applications integrated

The standard functions cooling, cleaning and agitation can be completed with extra's such as the tank guard, the volume indicator*, the eco-line items**, the special options required for robotic milking and PC-communication*.

Easy to view

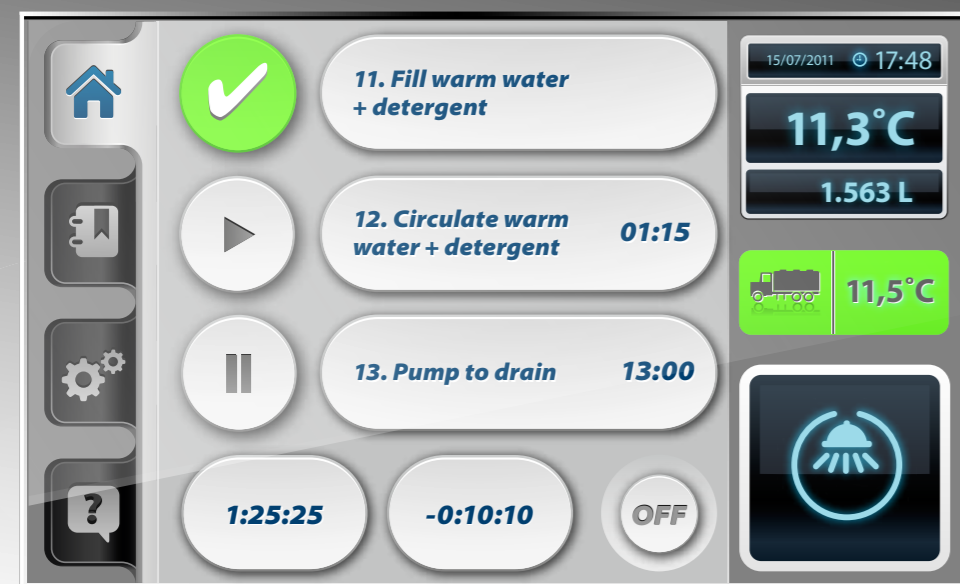
- High resolution 7" touch screen
- Detailed analysis of the logging information and set parameters about the cooling, cleaning, agitation, ...
- Data converted into surveyable graphs

Easy interchange of data

Easy and fast interchange without adjusting the parameters: each milk cooling tank has its own ID installed on one SD-card, enabling easy and fast interchange without adjusting parameters.

* integration in the iControl end 2012

** : ask for the leaflet about energy saving equipment



Intelligent



Safeguarding the milk quality is the key topic!



Cooling

- No interference required: automatic start-up of the cooling after cleaning
- Milk quality preserved thanks to the built-in back-up features such as second milk temperature probe
- Less energy consumption:
 - direct expansion cooling system in combination with Eco-Cool technology
 - ice bank cooling system:
 - intelligent ice building* according to the real requirements
 - a 24 hr time clock for optimal use of night rate electricity
- Safe and gentle cooling of the milk in combination with robotic milking or in case of seasonal fluctuations in the milk supply, thanks to the Soft Start Cooling**
- Flexible cooling:
 - two temperature set points - ideal for cheese makers
 - deep cooling in case the milk is collected shortly after milking



Cleaning

- Optimal water consumption thanks to the individual setting of water volume per cleaning step
- Automatic adjustment of cleaning times according to the type and volume of the tank and the chosen amount of cleaning water
- Ready for future developments in cleaning agents: fine dosing of detergent

Possible to integrate the tank guard to double check the cooling, cleaning and agitation with logging possibilities on PC*

Diagnostic ability

Integration of installation, maintenance and service diagnostics.

In the rare case of problems, the iControl will spontaneously propose a possible solution to the problem.

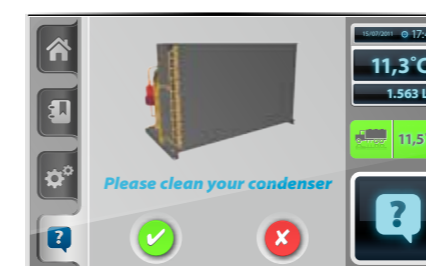
Announcements

The iControl is able to announce important services for the dealer as well for the dairy farmer. These announcements help to safeguard the good, efficient and economical operation of the milk cooling tank, e.g.:

- When the condenser of the cooling unit has to be cleaned
- When a check-up of the cooling is required
- When the filter of the air blower on the ice builder should be replaced
- Many more...

* integration in the iControl end 2012

** : ask for the leaflet about cooling with and robotic milking



Interactive



A two-way communication between iControl, milking system and PC makes your life easier!



"internal" interaction

- Easy consultation of information: all user's and maintenance manuals, spare parts lists, drawings, graphs, ... available immediately in the language of the user
- Water flow is ALWAYS measured, even with very pure mountain water
- ALL parameters, such as communication with Eco-Tronic** and Eco-Cool** cooling unit can be loaded up via the iControl - no extra tools required
- Reading out the volume indication* of the milk quantity stored in the milk cooling tank



"external" interaction

- Stay up to date via your mobile phone. It is possible to receive text messages to follow-up the cooling and cleaning of the milk cooling tank
- Integration of the communication between milking system, buffer tank and milk cooling tank:
 - Automatic "start of the cooling" after start-up milking system
 - In case no milk is entering the milk cooling tank e.g. due to the cleaning or breakdown of the milking system. No needless operation of the cooling unit resulting in energy saving
- Possible to upload external information in the iControl e.g. updates
- Possible to check all data from behind your desk*
- Changing the user parameters of the iControl from a distance*

* integration in the iControl end 2012

** : ask for the leaflet about energy saving equipment

iControl
Packo milk cooling tank control unit

