

MILK COOLING TANK with ICE WATER COOLING REM/DIB

3800 - 15000 l

Characteristics

- ›Horizontal tank with laser welded efficient evaporator
- ›Constructed of stainless steel 18/10 – AISI 304
- ›Chassis with solid leg construction and adjustable feet (standard 2 % slope)
- ›Flat manhole and swivelling cover with rubber seal
- ›Detachable air vent
- ›2 milk inlet openings, 80 mm (1 in the manhole cover, 1 at the back)
- ›Tank outlet 80, self washing outlet with butterfly valve and road tanker connection NW 50 or 65 (other milk road tanker connections on request, e.g. SMS, DS, RJT or IDF)
- ›"Self washing outlet" easy to upgrade (no welding). Increased second hand value.
- ›All models are fitted with a stainless steel ladder
- ›Tank conform EN 13732 standard - KEYMARK

Tank control and display

- ›All electrical tank components 1 ~ 230V – 50Hz (other voltages / frequencies on request)
- ›Milk temperature control with electronic operating unit DOLPHIN
- ›Digital temperature indication with large LCD display
- ›Deep cooling (1.9 °C)
- ›Two adjustable set points (3.2 °C and 4.5 °C)
- ›Full automatic logging of cooling, cleaning and errors

Cooling and agitation

- ›All the benefits of cooling with ice water apply
- ›A separate ice builder provides the ice water
- ›Very fast cooling with no risk of freezing even the smallest quantities of milk
- ›A high cooling capacity is guaranteed
- ›The number of agitator motors depends on the volume of the tank (see table tank dimensions)

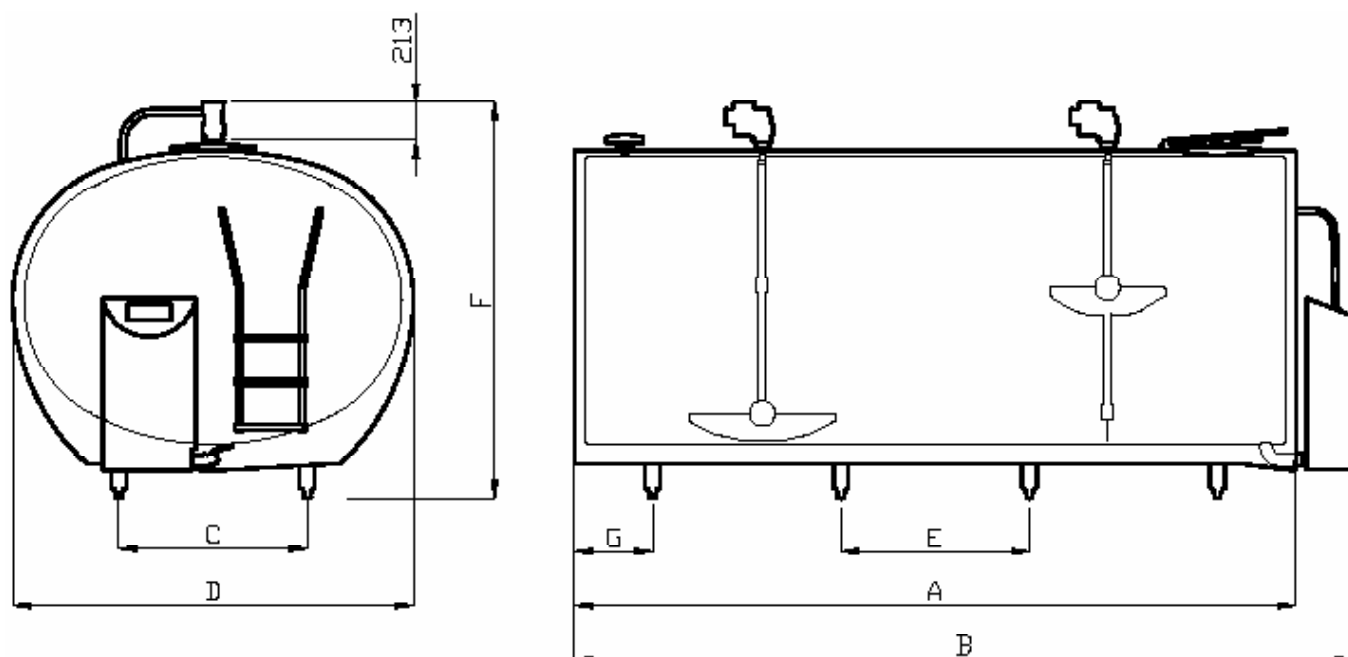


Cleaning

- ›2 automatic dosage pumps for detergents
- ›Automatic water level control for optimal filling and low water usage
- › High pressure dynamic Packo-ROTOJET system with spray balls in agitator blade(s)
- ›Vertically mounted stainless steel cleaning pump, no risk of freezing
- ›Pump power depends on number of agitators:
 - 1 agitator: 1,1 kW, 1 ~ 230V 50Hz
 - 2 agitators: 1,5 kW, 1 ~ 230V 50Hz

Available options

- ›Warning messages sent by SMS
- ›Timer for manual cooling and cleaning
- ›Dosing cup(s) for detergents
- ›ECO-WASH short cleaning
- ›Tank adapted to AMS milking
- ›OCULUS tank guard to monitor all tank functions
- ›PACAP digital volume indication with LED display (see picture above)
- ›Bottom filling
- ›Flow meter alkaline detergent



REM/DIB Dimensions

Model	Max. cap. litres	A mm	B mm	C mm	D mm	E mm	F mm	G mm	Legs number	Weight kg
3800	3944	2503	2854	934	1800	1690	1840-1960	402	4	590
4400	4562	2873	3224	934	1800	1050	1840-1960	382	6	667
5000	5128	3213	3564	934	1800	1210	1840-1960	392	6	730
RS 5000	5102	2380	2731	1050	2100	1580	2058-2178	400	4	750
6150	6321	2893	3244	1050	2100	1050	2058-2178	392	6	854
7200	7369	3354	3705	1050	2100	1210	2058-2178	462	6	901
RS 8000	8159	3140	3491	1050	2233	870	2208-2328	259	8	1065
8200	8406	3809	4160	1050	2100	1050	2058-2178	324	8	1090
9000	9566	3681	4032	1050	2233	1050	2208-2328	260	8	1160
10000	10482	4011	4362	1050	2233	1050	2208-2328	425	8	1229
12000	12602	4810	5161	1050	2233	1050	2208-2328	305	10	1450
15000	15762	5986	6337	1050	2233	1050	2208-2328	368	12	1800

With ECO-WASH: B + 190 mm.
Available in 2, 4 & 6 Milkings and AMS milking.

Subject to modifications. The photographs and descriptions provided are intended as a guide and may not always exactly match the items supplied.

REM/DIB 3800-5000: 1 agitator incorporating 1 ROTOJET spray ball.
REM/DIB 6150-8000: 1 agitator incorporating 2 ROTOJET spray balls.
REM/DIB 8200 - 15000: 2 agitators incorporating 4 ROTOJET spray balls.

