

MILK COOLING TANK with DIRECT EXPANSION

OM/DX 300 - 3400 l



Characteristics

- ›Horizontal tank with large laser welded evaporator and efficient circulation of the milk guarantees maximum cooling performance
- ›Space-saving, ergonomic design, easy to clean
- ›Constructed of stainless steel 18/10 – AISI 304, hermetically sealed, finished and well polished
- ›Chassis with solid leg construction and adjustable feet (maximum 5% slope)
- ›One-piece cover mounted on pneumatic springs, allowing easy opening and closing
- ›CFC free polyurethane foam insulation
- ›Standard NW 50 outlet with drain plug
- ›The cooling tank is designed, manufactured and tested according to international standards
- ›Tank conform EN 13732

Tank control and display

- ›All electrical tank components 1 ~ 230V – 50Hz (other voltages / frequencies on request)
- ›Water tight switchbox with well dimensioned ON/OFF switch and controls for the cooling unit
- ›Milk temperature control with electronic operating unit PCV2-2
- ›Digital temperature indication with large LED display

- ›Two adjustable set points (3.2 °C and 4.5 °C)
- ›Deep cooling possible

Cooling and agitation

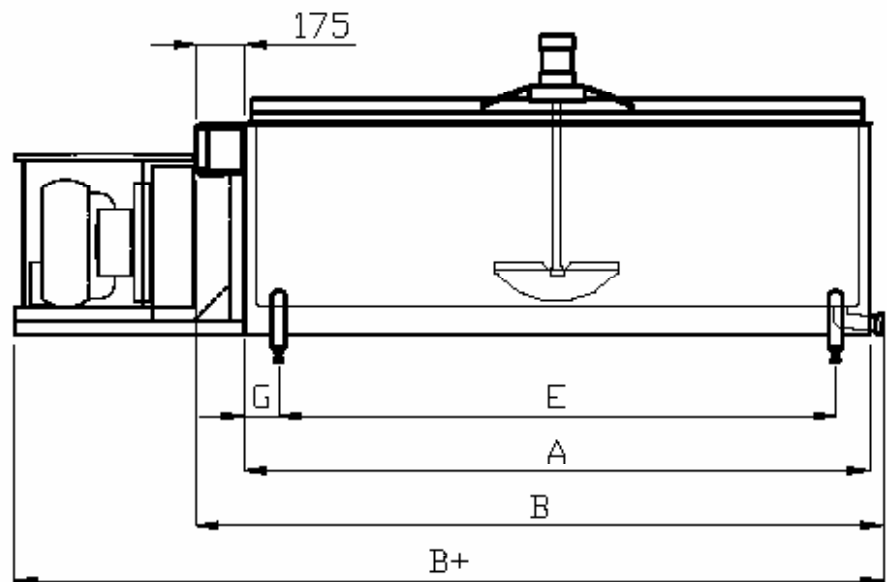
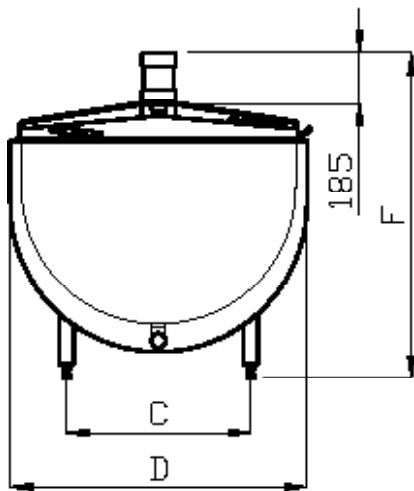
- ›Thanks to the free evaporation and proper mixing of the milk the heat exchange is optimal
- ›Special evaporator design enables optimal heat transfer, a high cooling capacity is guaranteed
- ›Efficient agitator mixes even small quantities of milk
- ›Cooling pipes pre-mounted with thermostatic expansion valve(s)
- ›Cooling unit delivered separately

Cleaning

- ›The U-shape allows easy but thorough cleaning with a minimum of effort

Available options

- ›Cooling unit incorporated
- ›Butterfly valve NW50
- ›Individual calibration with laminated volume chart
- ›Automatic cleaning



OM/DX Dimensions

Model	Max. cap. Liters	A mm	B mm	B+ mm	C mm	D mm	E mm	F mm	G mm	Agitator number	Legs number	Weight kg
300	318	804	1067	1296	580	880	555	1115-1155	125	1	4	120
450	476	1177	1440	1670	580	880	928	1115-1155	125	1	4	136
600	635	1527	1790	2289	580	880	1279	1115-1155	125	1	4	156
800	843	1578	1841	2070	670	1080	1328	1145-1185	125	1	4	184
1000	1054	1928	2191	2420	670	1080	1678	1145-1185	125	1	4	210
1200	1264	2278	2541	2770	670	1080	2028	1145-1185	125	1	4	230
1500	1617	1943	2206	2410/2803*	800	1441	1668	1272-1392	138	1	4	260
1800	1930	2327	2590	3362	800	1441	2052	1272-1392	138	1	6	290
2300	2385	2676	2939	3711	800	1441	2401	1325-1445	138	1	6	330
2750	2875	3250	3505	4055	800	1441	2x1449,5	1325-1445	139,5	2	6	415
3400	3520	3250	3505	4055	800	1441	2x1451	1430-1550	138	2	6	447

Available in 2 and 4 Milkings.
 B+ : with cooling unit incorporated.
 *4 / 2 Milkings.

Subject to modifications. The photographs and descriptions provided are intended as a guide and may not always exactly match the items supplied.

